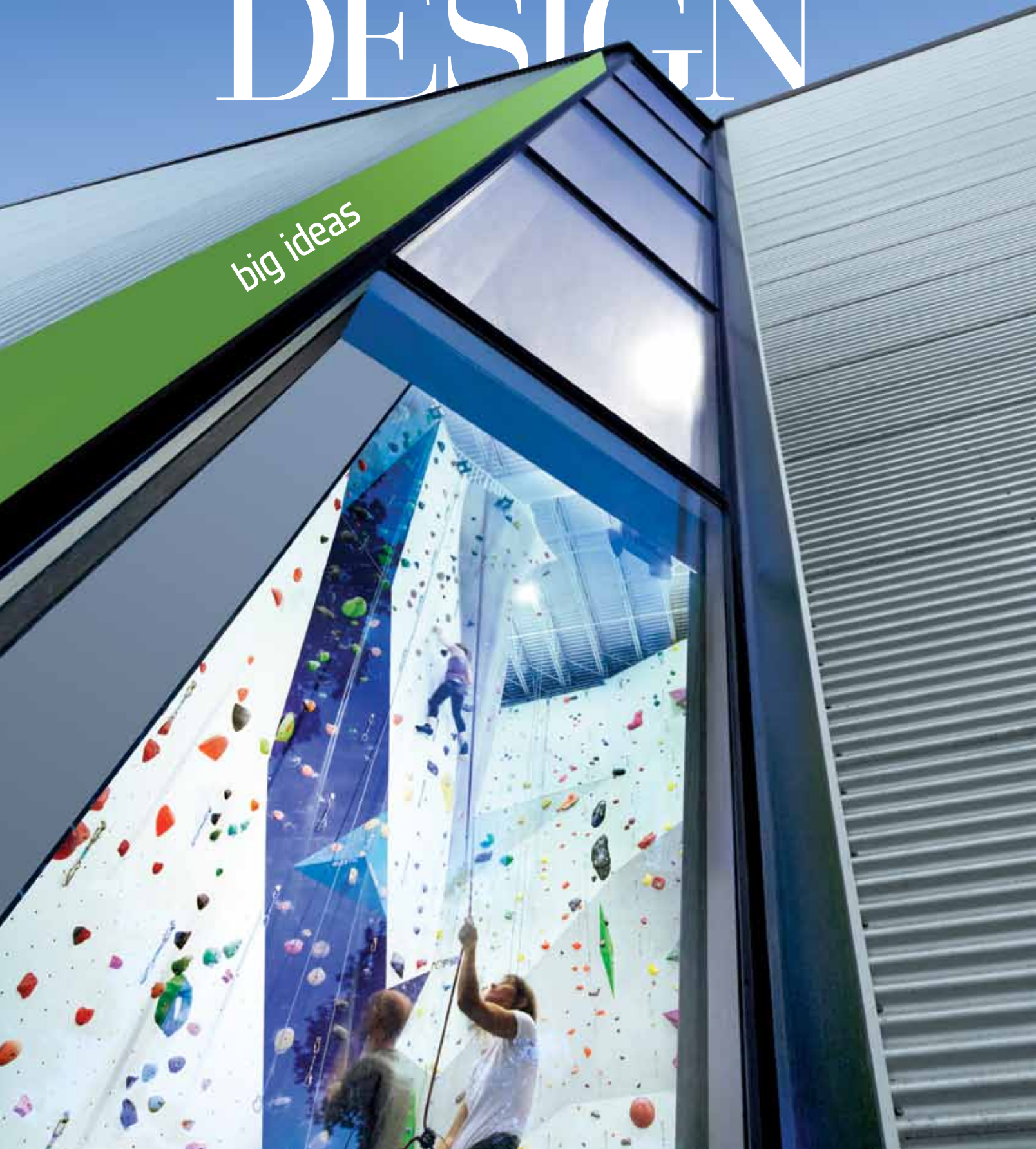
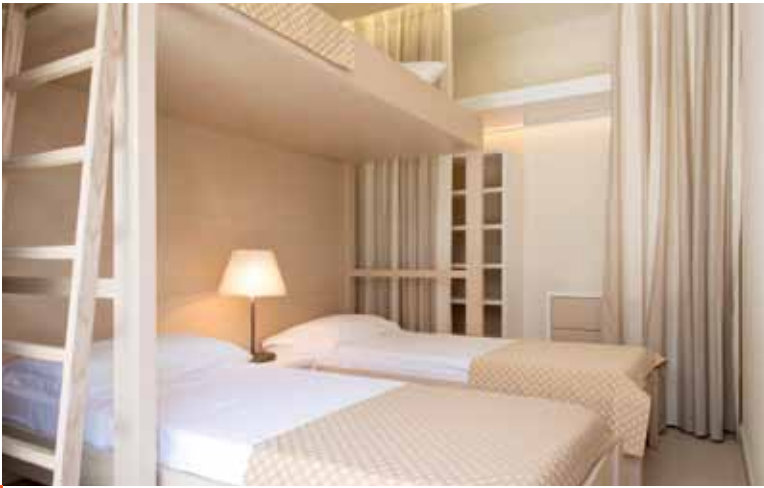


INTERIOR DESIGN[®]

MARCH
2014

big ideas





lots of happy campers

On trips to Venice, Interior Design Hall of Fame member Matteo Thun prefers to stay at a friend's house. But that may be about to change. At Camping Marina di Venezia in Cavallino-Treporti, across the lagoon, Matteo Thun & Partners demolished the existing vacation accommodations and replaced them with 32 two-bedroom, 650-square-foot units.

His first priority, he says: "Save the grove of umbrella pines." His second: "Do good quality cheaply." To crack the cost equation, he designed eight identical four-unit structures instead of 32 individual bungalows. The structures are built with hollow blocks in a wood-cement aggregate. He filled them with concrete, so no other insulation is necessary, and clad them in prefabricated larch panels, which attach in a flash. —*Mark McMenamin*

Clockwise from top left: Of the two bedrooms in each Matteo Thun & Partners–designed unit at Camping Marina di Venezia in Cavallino-Treporti, Italy, one offers three single beds. Umbrella pines between four-unit structures were spared. Prefabricated larch cladding is screwed into place.

